



Board of Behavioral Sciences
1625 N Market Blvd, Suite S-200
Sacramento CA 95834
(916) 574 – 7830

Demographic Report on Licensees and Registrants

-Summary-

December 2007

Introduction

In Fall 2006 the Board of Behavioral Sciences (BBS) conducted a demographic survey of its active licensees and registrants. The BBS mailed out approximately 64,000 demographic surveys and received 25,909 responses, a response rate of 40.48%. This is the BBS' first effort at obtaining and analyzing demographic information about its licensee and registrant populations. This report highlights some of the findings of the survey.

Acknowledgements

This report would not be possible without the extraordinary efforts of BBS staff. Many staff members volunteered to work extra hours on weekdays and weekends opening and keying-in survey responses.

Survey Instrument

Approximately 64,000 active licensees and registrants in Fall 2006 received the Demographic Survey. The survey requested respondents answer questions in eight categories.

Table 1. Survey Categories and Possible Responses

1. Race/Ethnicity American Indian or Alaskan Native – Asian - African American - Hispanic/Latino - Pacific Islander - Non-Hispanic White - Other/Multi-race	2. Language Capacity (other than English) Spanish – Chinese – Tagalog – Vietnamese – Korean – Other (Please Specify)
3. Gender Male – Female	4. Professional Data Age – Years in Practice
5. Category of License Marriage and Family Therapist (MFT) – Licensed Clinical Social Worker(LCSW) – Licensed Educational Psychologist (LEP) – Marriage and Family Therapist Intern (IMF) – Associate Clinical Social Worker (ASW)	6. Primary Practice Setting Private Practice – State/Federal Agency – County/Municipal Agency – Nonprofit/Charitable Organization – Licensed Health Care Facility – College or University – School (elementary, etc) – Other (Please Specify)
7. Specialty Certifications Please List	8. Have you ever been a subject matter expert (SME) for the Board? Yes – No

Data Limitations

Several survey categories gave the respondent the option of writing in a response as opposed to selecting from a list of options. Data analysis became difficult in these categories due to the variety of

responses received. These categories include Language Capacity, Primary Practice Setting, and Specialty Certifications.

Language Capacity - The nature of some write-in responses indicated respondents may have misinterpreted the question. For example, some respondents checked "Other" in the language category, writing in "English." However, the question asked the respondent only to indicate language fluency in addition to English. This partly compromised the integrity of responses indicating "Other" in this category. In this report, the category "Other" is left out of the analysis.

Primary Practice Setting – Responses varied greatly in this category among respondents. Some indicated one primary practice setting and others indicated multiple settings. This became problematic for data entry and difficult for analysis.

Specialty Certifications – The variety of responses and confusing acronyms for certifications greatly limited the usefulness of this data. Some respondents also used the space to provide general comments. Information on specialty certifications is omitted from this report.

General Licensee and Registrant Population Characteristics

Table 2. Statistical Breakdown of All Respondents

Race and Ethnicity	
Non-Hispanic White	74.40%
Hispanic Latino	8.38%
Multi Race/Other	6.36%
Asian	4.70%
African American	3.59%
American Indian/Alaska Native	0.78%
Pacific Islander	0.40%
No Response	1.41%
<i>25,548 Responses</i>	

Composition of Respondents	
MFT	49.71%
LCSW	29.16%
IMF	10.08%
ASW	8.43%
LEP	2.27%
No Response	0.35%
<i>25,822 Responses</i>	

Age of Respondents (in years)	
Mean =	51.44
Median =	53
<i>25,216 Responses</i>	

Gender	
Female	78.53%
Male	20.95%
No Response	0.53%
<i>25,775 Responses</i>	

Language Fluency (Excluding English)	
Spanish	11.83%
Chinese	1.21%
Korean	0.42%
Tagalog	0.36%
Vietnamese	0.34%
<i>3,669 Responses</i>	

Primary Practice Setting	
Private Practice	39.49%
Non Profit/Charitable	19.24%
County/Municipal Agency	13.02%
Licensed Health Care Facility	9.36%
Schools	5.19%
State/Federal Agency	3.66%
College or University	2%
No Response	1.95%
Other	6.12%
<i>25,409 Responses</i>	

Respondents' Years in Practice	
Mean =	15.53
Median =	14
<i>23,815 Responses</i>	

Past/Current SMEs	
Yes	2.23%

A statistical breakdown of all responses to the survey indicates several characteristics about the BBS' licensee and registrant population.

Race/Ethnicity Characteristics

The overwhelming majority of the respondents to this survey indicated a race/ethnicity of Non-Hispanic White (74.4%). The general California population is approximately 44.4% Non-Hispanic White.¹ The general California population is much more diverse than the total respondents to this survey.

When broken down by license and registration type, the registration response groups (ASW and IMF) resemble more closely the race/ethnicity of the California population. Of all response groups, the ASW response group most closely resembles the race/ethnicity characteristics of the general California population.

Language Fluency Characteristics

When compared to the general population, total respondents were less capable of speaking a language other than English. Approximately 25.80% of Californians speak fluent Spanish, while only 11.38% of total respondents to this survey can speak the language.² MFTs are the least likely to be able to speak Spanish (8.08%).

Much like race/ethnic diversity, the Spanish speaking abilities of ASW and IMF respondents are much higher (24.3% and 16.43%, respectively) than that of licensees.

Composition of Respondents

Nearly half (49.71%) of all respondents to the survey held an MFT license. As of September 2007, MFTs made up approximately 44% of all active licensees and registrations with the BBS. The composition of the respondents does not exactly reflect that of the current licensee/registrant breakdown.

Table 3. Comparison of Respondents and Active Licensees and Registrants

License/Registration	Survey Respondents	9/2007 Active Licensees/Registrants
MFT	49.71%	44.03%
LCSW	29.16%	25.55%
IMF	10.08%	16.32%
ASW	8.43%	11.43%
LEP	2.27%	2.68%

Primary Practice Setting Characteristics

When considering total respondents, a private practice setting was the most frequently identified primary practice setting (39.49%). When broken out by response group, identifying a private practice setting as their primary practice group was most common amongst MFTs (59.19%). A private practice setting placement also ranked first among LCSW respondents (27.77%). As one might assume, the majority of LEPs (65.03%) identified K-12 schools as their primary practice setting. The most frequently identified primary practice settings for IMFs and ASWs were non-profit/charitable organizations and county/municipal agencies.

Respondent Age Characteristics

The median age of all respondents was 53 years. The median ages of MFTs, LCSWs, and LEPs are clustered near the overall median age (MFT=56 yrs; LCSW=54 yrs; LEP=56 yrs). The median ages of

¹ State of California Department of Finance. (September 2007). California Current Population Survey Report: March 2006. Sacramento, California.

² United States Census Bureau. (2000). United States 2000 Census. Washington DC.

registrant respondents (IMFs and ASWs) are significantly younger. The median age for an IMF respondent was 40 years. ASWs, the youngest of all respondent groups, had a median age of 34 years.

The median age of a respondent category seems to have a correlation to race/ethnic diversity and second language fluency. The youngest response groups are the most racially and ethnically diverse and more apt to possess some second language fluency. This trend is especially apparent in the ASW response group.

Gender Characteristics

Females made up a staggering majority of the respondents. Just 20.95% of all respondents were males as opposed to 78.53% female respondents. This trend of a female dominated licensee population seems to be continuing as females make up an even larger percentage of IMF (82.73%) and ASW (85.77%) respondents.

Years in Practice Characteristics

LCSWs and LEPs indicated the most years in practice each with a median of 20. MFTs ranked third with a median of 15 years in practice. ASW and IMF registrants had significantly fewer years in practice with medians of 4 and 3 respectively.

Table 3. Age Distribution of Respondents

Age	All	MFT	LCSW	LEP	IMF	ASW
20-24	0.18%	0.02%	0.04%	0.00%	0.67%	1.03%
25-29	4.14%	0.83%	1.07%	0.17%	15.64%	21.76%
30-34	7.82%	3.72%	5.63%	4.70%	18.31%	32.57%
35-39	9.00%	6.39%	9.48%	9.76%	15.36%	10.34%
40-44	8.19%	7.03%	9.11%	4.88%	11.03%	9.35%
45-49	10.38%	10.59%	10.82%	10.10%	10.75%	7.28%
50-54	15.18%	16.33%	16.26%	16.90%	12.21%	7.85%
55-59	17.45%	20.34%	18.35%	20.91%	9.57%	5.73%
60-64	14.11%	17.19%	15.18%	16.55%	4.25%	3.20%
65-69	7.33%	9.05%	8.13%	7.84%	1.77%	0.52%
70-74	3.66%	5.15%	3.18%	4.18%	0.35%	0.28%
75-79	1.72%	2.26%	1.75%	2.96%	0.08%	0.09%
80-84	0.65%	0.79%	0.79%	0.87%	0.00%	0.00%
85+	0.21%	0.30%	0.20%	0.17%	0.00%	0.00%

Age Distribution

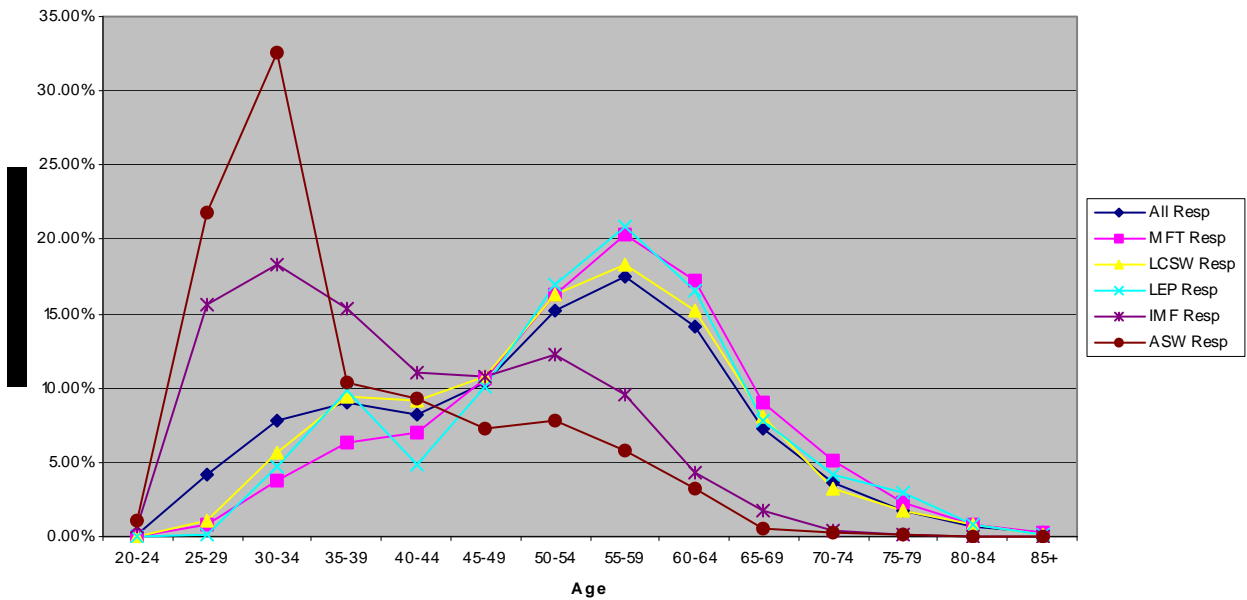


Table 4. Race/Ethnicity Distribution of Respondents and California Population³

Race/Ethnicity	All	CA Population	MFT	LCS	LEP	IMF	ASW
Non-Hispanic White	74.40%	44.40%	81.98%	72.49%	81.49%	61.51%	49.89%
Hispanic Latino	8.38%	34.90%	4.64%	8.96%	4.58%	14.78%	22.01%
Multi Race/Other	6.36%	N/A	6.37%	5.74%	4.58%	8.50%	6.32%
Asian	4.70%	11.90%	2.52%	5.78%	4.41%	6.93%	11.21%
African American	3.59%	6.40%	1.71%	4.65%	2.89%	6.32%	7.92%
American Indian/Alaska Native	0.78%	0.30%	0.71%	0.79%	0.51%	0.77%	1.14%
Pacific Islander	0.40%	1.70%	0.19%	0.45%	0.17%	0.73%	1.05%
No Response	1.41%		1.87%	1.14%	1.36%	0.46%	0.46%

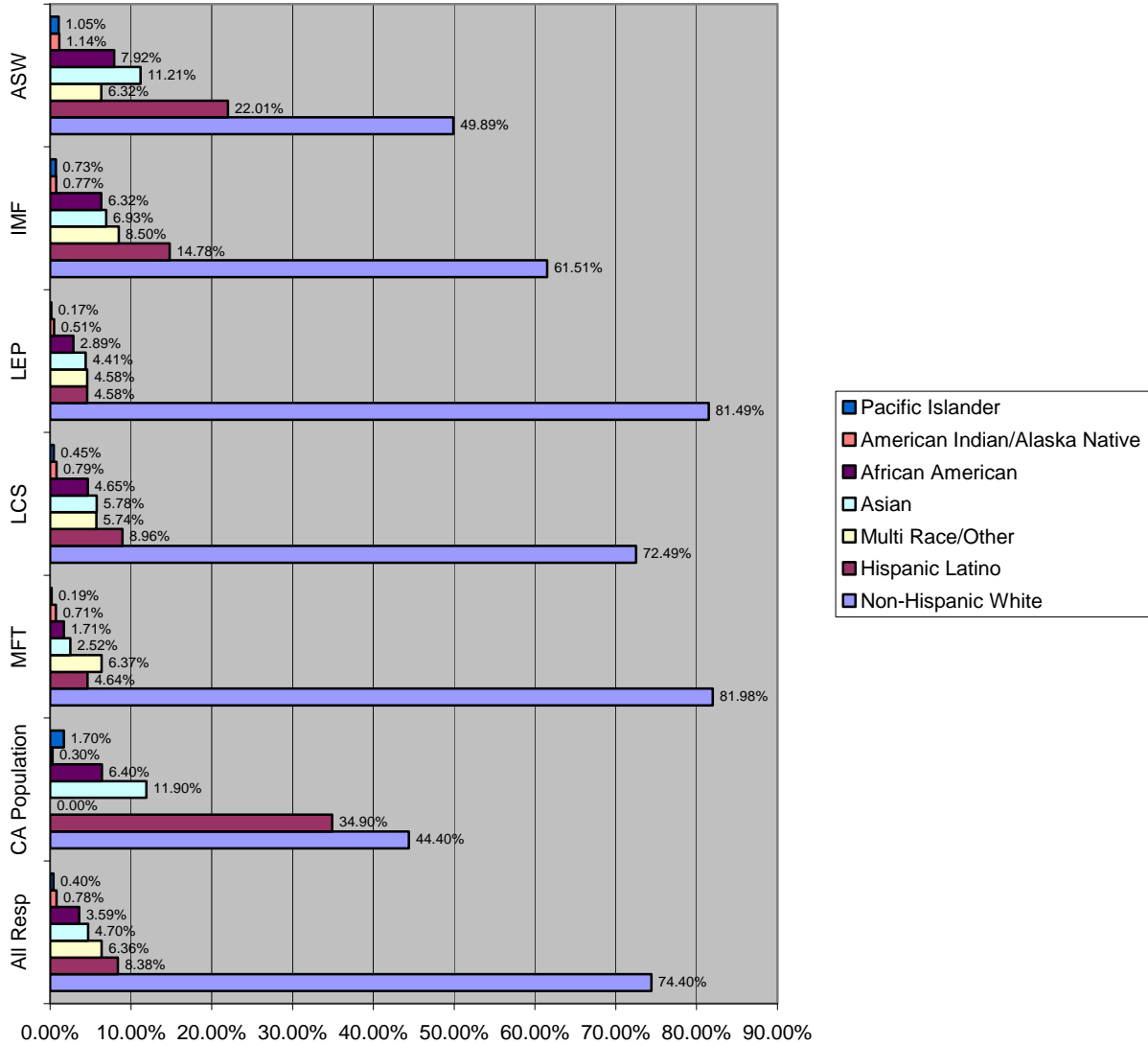
Table 5. Second Language Fluency of Respondents and California Population⁴

Language	All	CA Population	MFT	LCS	LEP	IMF	ASW
Spanish	11.83%	25.80%	8.08%	13.22%	9.51%	16.43%	24.30%
Chinese	1.21%	2.60%	0.64%	1.62%	1.36%	1.38%	2.88%
Korean	0.42%	0.95%	0.26%	0.33%	0.00%	0.65%	1.56%
Tagalog	0.36%	1.99%	0.16%	0.38%	0.00%	1.00%	0.78%
Vietnamese	0.34%	1.30%	0.16%	0.38%	0.17%	0.46%	1.10%

³ State of California Department of Finance. (September 2007). California Current Population Survey Report: March 2006. Sacramento, California.

⁴ United States Census Bureau. (2000). United States 2000 Census. Washington DC.

Race/Ethnicity



Language Fluency (excluding English)

